

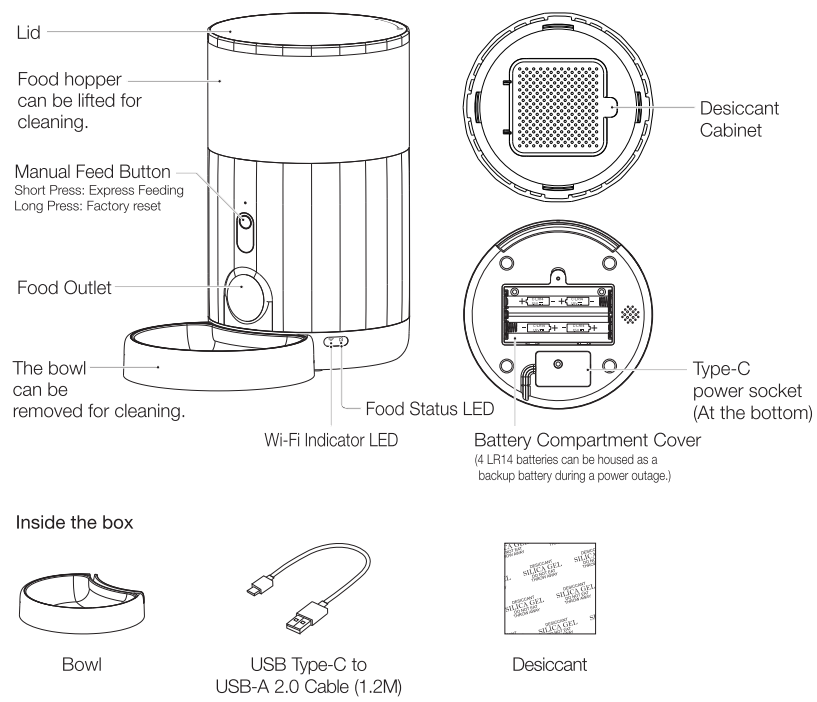
Nutri Mini Feeder
User Manual

迷你宠物喂食器
使用说明书

Model / 型号: PF005

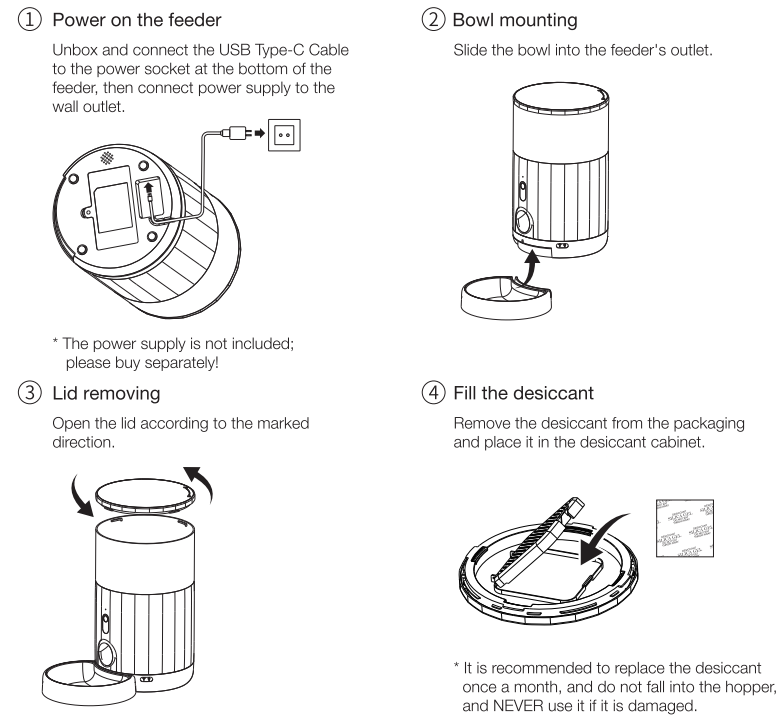
Please read this manual carefully before using.
Keep the manual in a safe place for future reference.
使用前请仔细阅读本使用说明书, 并妥善保管

01 / Meet your smart feeder

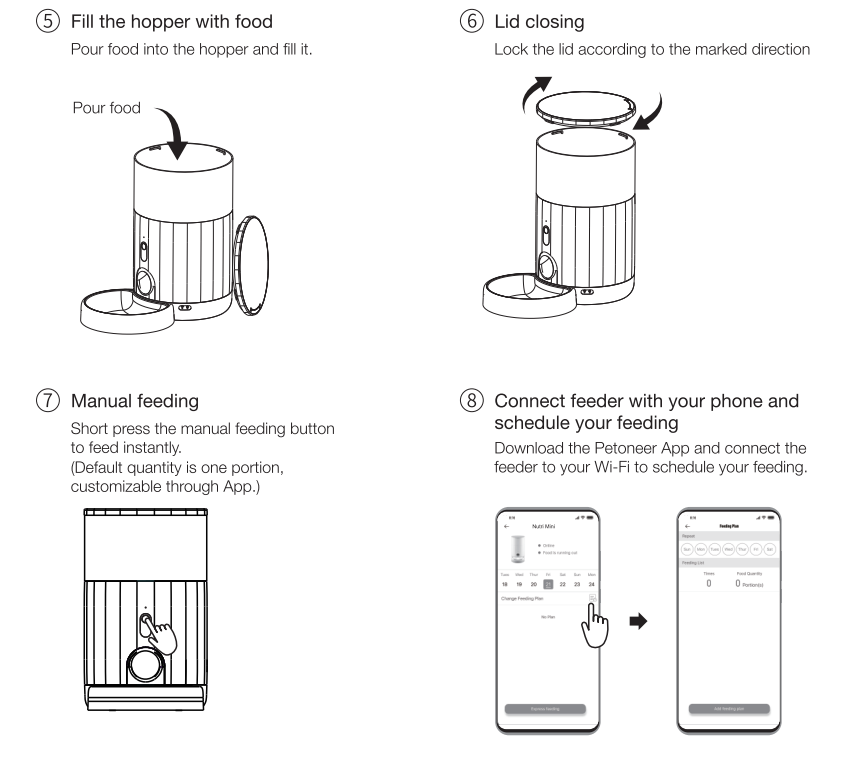


EN

02 / Operations



EN

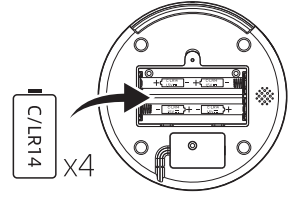


EN

Backup Battery Installation

Use a screwdriver to open the battery compartment cover at the bottom. Put four LR14 batteries inside (note the positive and negative poles), replace the cover and tighten the screws.

Note: You need to buy the batteries separately, and only alkaline dry batteries are supported. Before installing, make sure that there is nothing in the battery compartment. Install batteries for emergency backup in case of power failure. If the batteries are not used for a long time, please remove the battery.



03 / Quick Setup

1. Scan the QR code on the right and download the Petoneer App which is available on App Store and Google Play. Click Sign up to get walked through to create your Petoneer account.



2. Power on and ensure the Wi-Fi Indicator LED is blinking fast reflecting the device is ready for joining the Wi-Fi. Open the Petoneer App and click the "+" button and get walked through the SET-UP steps.

Notice: 1. The feeder doesn't support the 5GHz Wi-Fi, please make sure your Wi-Fi is 2.4G.
2. If the Wi-Fi indicator is not blinking fast after power-on, please long press and hold the manual feed button until the indicator blinks quickly.

EN

EN

04 / LED Status

LED Status		Specification
Red light is off	The food is more than 10%	Model: PF005 Power Input: 5V==1A Capacity: 2.6 L (1.2 Kg) Size: 7.52x7.52x12.40 inches 191x191x315 mm
Fast blinking red	The food is less than 10%	Communication: Wi-Fi (2.4 GHz) Range: 98.5 feet (30 m) Net Weight: 1.55 KG Warranty: 1 Year
Red steady on	Jam	

Manufacturer: SkyRC Technology Co., Ltd.
Address: 4,5,8/F, Building No.4, Meitai Science Park, Guangang South Road, Guihua, Guanlan, Longhua New District, Shenzhen 518110, China

05 / Precautions

- Please use it in the indoor environment;
- Do not drop anything other than dry food into the food hopper. Otherwise, there is a risk of dysfunction or mistaken feeding;
- To prevent feeder from being hit by pets, it is recommended to place the feeder at the corner or against the wall;
- Please shield or organize the power cord well to prevent the pet from biting the cable and causing dangerous situations such as electric shock;
- This product is only suitable for DRY FOOD, and WET FOOD is prohibited.
- It is recommended to replace the desiccant once a month, and do not fall into the hopper, and NEVER use it if it is damaged.
- The pet food's shape and density will cause some deviations from the food hopper's capacity and the feeding unit's quantity.
- After each fill-up of the hopper, there may be deviation of two portions at the initial feeding time. It is recommended to calibrate manually! (Click the manual feeding button until food is fed!)
- Clean the food passage regularly to get the kibble out smoothly.
- DO NOT clean the main unit; instead, please wipe it with a rag. After cleaning the other parts, please dry it before reinstalling.
- Children must use under the guidance of adults.

EN

EN

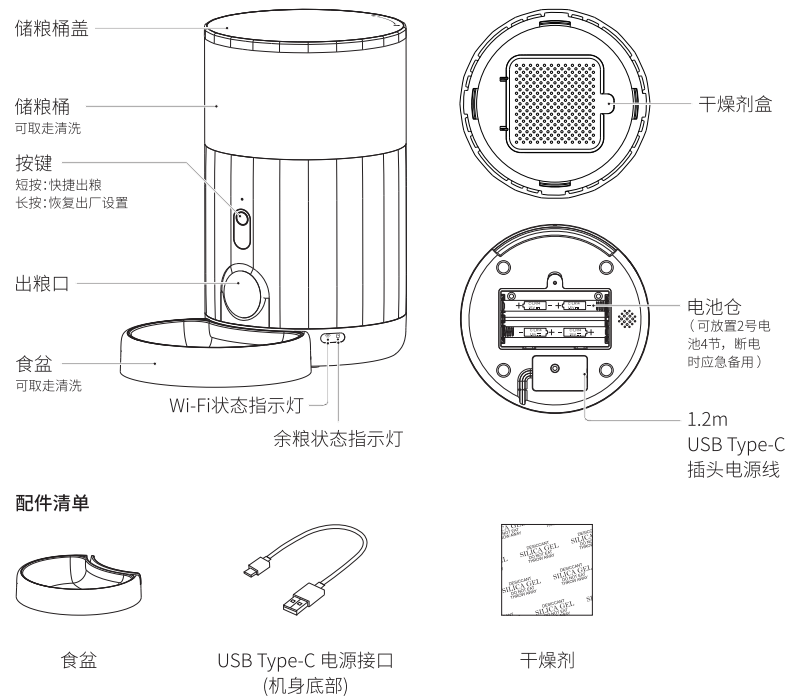
06 / Warranty Terms

Within the period of warranty, if the product fails with no fault of user operations, it will be repaired at Petoneer's expense. The warranty will not cover product failure in examples below:
1). Intentional damage to the product by the user or third party
2). Failure to operate or maintain the product following the (QIG) Quick Installation Guide Instructions.
3). Failure by natural wear and tear including but not limited to scratching, corrosion, oxidation and rusting.
4). Failure by non-authorized repair of the product including but not limited to user's own or third-party repairing attempts or modifications.

www.petoneer.com

All Pictures shown in the manual are for illustration purpose only.
Actual product may vary due to product enhancement.

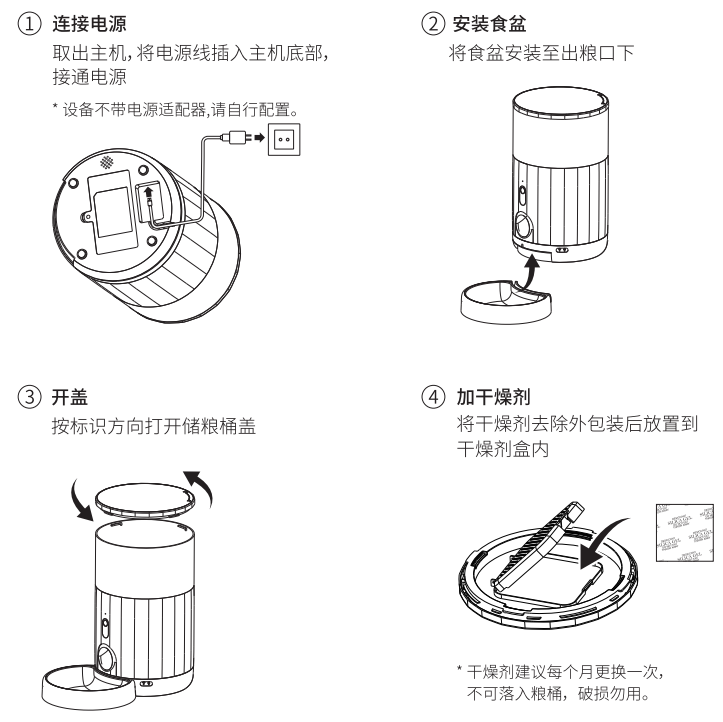
01 / 产品概览



中文

中文

02 / 使用操作



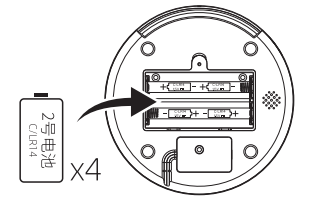
中文

中文

安装备用电池

用螺丝刀打开主机底部电池盖, 将四节2号电池装入电池仓(注意正负极), 装回电池盖并拧紧螺丝。

提示: 备用电池需自行购买, 仅支持碱性干电池。安装电池前, 请确保储粮桶内无任何东西。安装电池, 可供断电时紧急备用, 备用电池如长期不用, 请将电池取出。



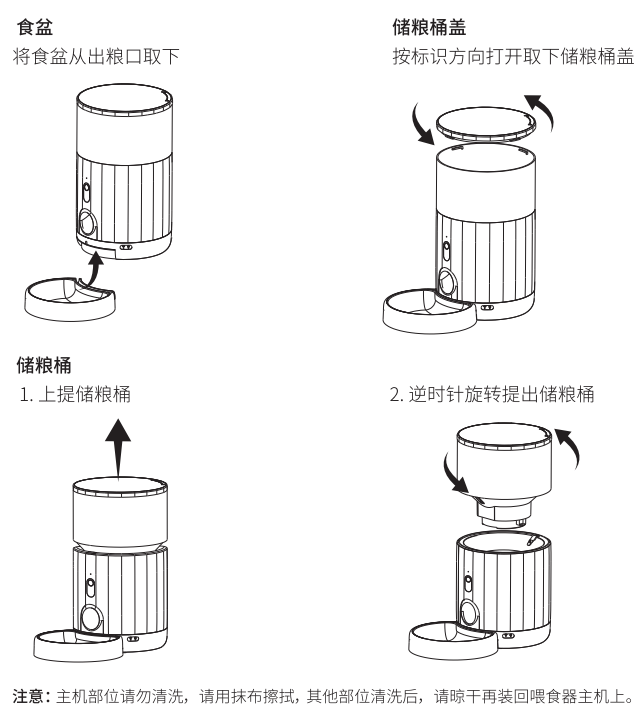
03 / 快速添加设备

- 扫描右侧二维码, 按照提示下载安装 "Petoneer" APP, 并注册登录账号。
- 通电后, Wi-Fi 指示灯快闪, 进入配置模式。请打开 "Petoneer" APP, 点击 "+" 按照提示进行设置。



注意: (1) 喂食器不支持5GHz路由器, 请使用2.4GHz路由器
(2) 若通电开机后Wi-Fi指示灯不在快闪状态, 请长按按键, 直至指示灯快闪

04 / 拆卸清洗



注意: 主机部位请勿清洗, 请用抹布擦拭, 其他部位清洗后, 请晾干再装回喂食器主机上。

中文

中文

05 / 余粮状态指示灯与参数

余粮状态指示灯		基本参数	
红色熄灭	余粮约大于10%	产品名称: 迷你宠物喂食器	产品型号: PF005
红色快闪	余粮约小于10%	容量: 2.6L (约1.2Kg)	工作电源: 5V==1A
红色常亮	堵粮	通信方式: Wi-Fi (2.4GHz)	通信距离: 30m
		产品尺寸: 191x191x315mm	产品净重: 1.55Kg
		执行标准: Q/TK 002-2019	保修期: 1年

服务热线: 400-808-5869
服务网址: www.petoneer.com

制造商: 天空创新科技(深圳)有限公司
制造地址: 深圳市龙华区观澜街道桂花社区观光路美泰工业园4栋4,5,8层

06 / 注意事项

- 请在室内环境使用。
- 请勿将宠物干粮以外的物品落入储粮桶, 否则存在造成设备异常或造成宠物误食的风险。
- 为防宠物扑倒, 建议将喂食器放置角落或靠墙处。
- 请做好电源线遮挡或收纳, 以防宠物撕咬电线, 造成触电等危险状况。
- 此产品只适用宠物干粮, 请勿放入湿粮。
- 干燥剂建议每个月更换一次, 不可落入粮桶, 破损勿用。
- 宠粮颗粒形状及密度会对粮桶及出粮容量造成一定偏差。
- 在空粮桶中加入宠粮后, 首次出粮量可能会有两份左右偏差, 点击手动出粮按钮直至出粮即可。
- 请定期清理粮道, 保持出粮顺畅。
- 主机部位请勿清洗, 请用抹布擦拭, 其他部位清洗后, 请晾干再装回喂食器主机上。
- 儿童必须在成人指导下使用。

07 / 保修条款

在保修期限内, 对于正常使用Petoneer产品过程中, 由于非人为导致的损坏, 所产生的维修费用和人工费用, 由Petoneer承担。以下情况导致的维修不在保修条款包含中。

- 故意行为导致的损坏。
- 未按照产品使用说明书指引使用、保养该产品。
- 设备正常磨损、腐蚀、氧化、锈垢、耗损等原因导致的损失。
- 因在非Petoneer授权维修店或用户自身进行维修、改造、清洗而造成的损坏。

* 为了更好的产品, 我们会定期进行产品改良。产品实物可能与说明书有差异。

中文

www.petoneer.com