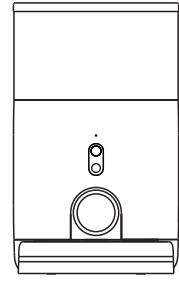


Size: 120x120mm



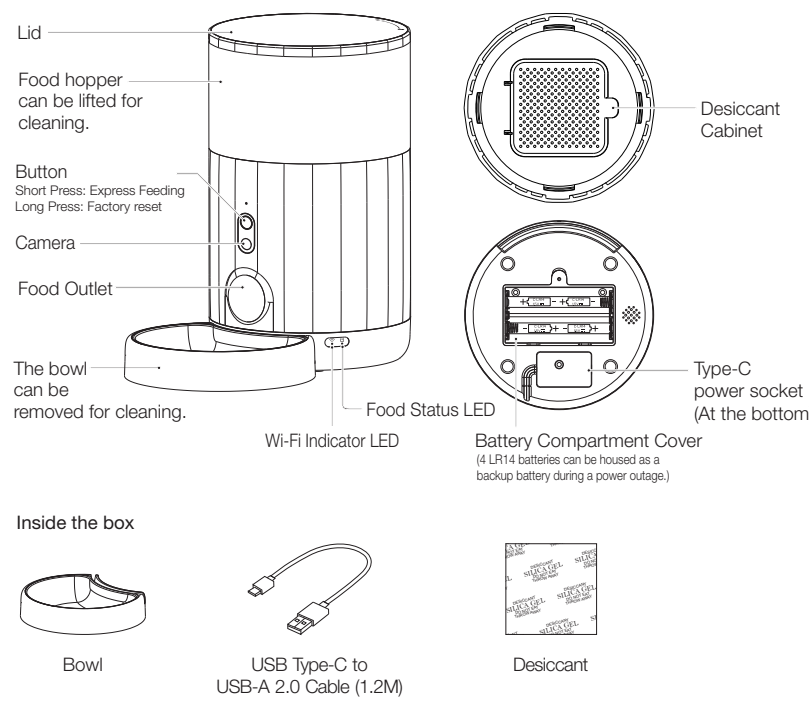
Nutri Vision Mini Feeder
User Manual

迷你可视宠物喂食器
使用说明书

Model / 型号: FDW050

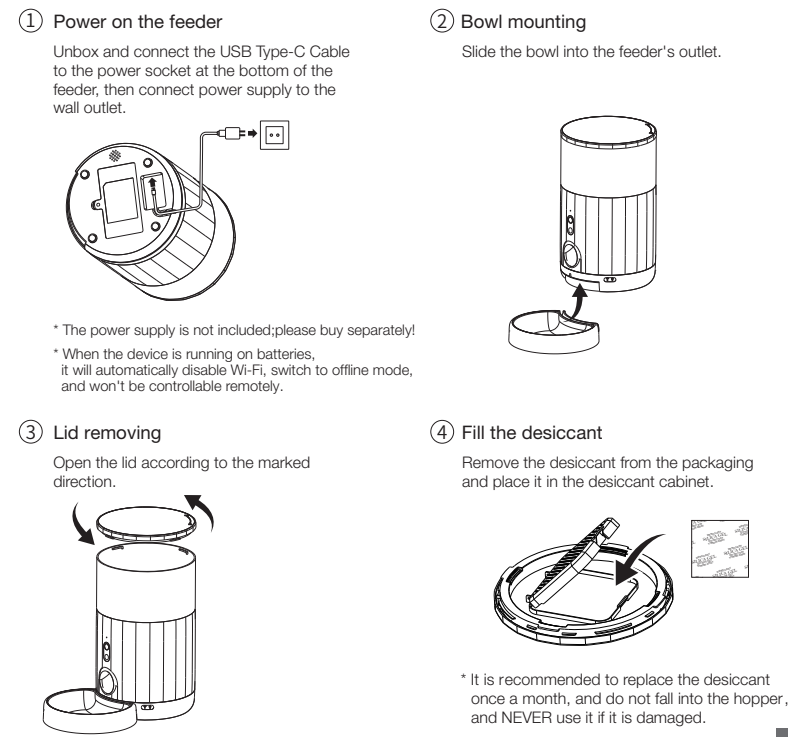
Please read this manual carefully before using.
Keep the manual in a safe place for future reference.
使用前请仔细阅读本使用说明书,并妥善保管

01 / Meet your smart feeder

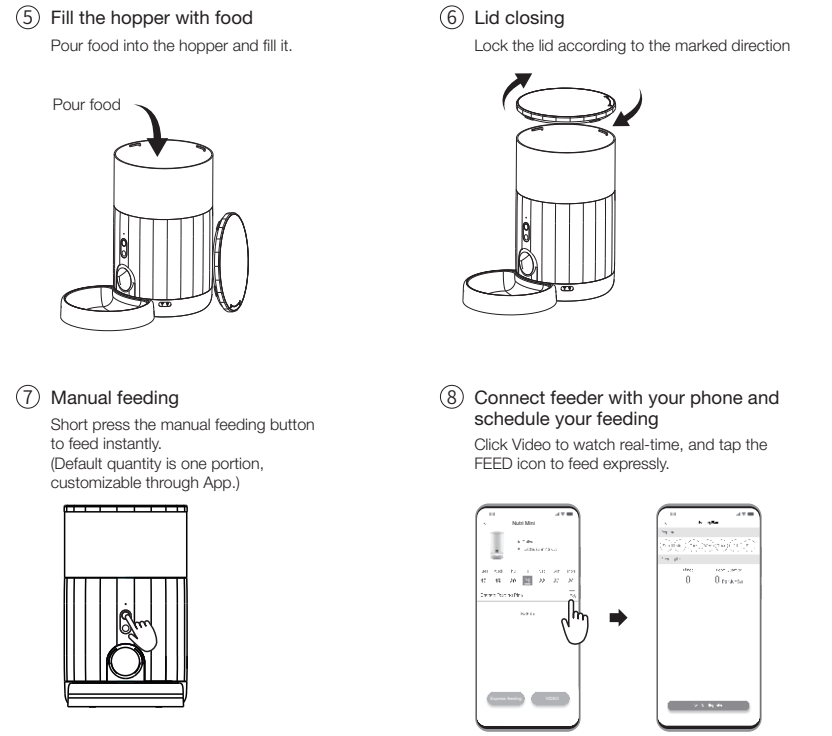


EN

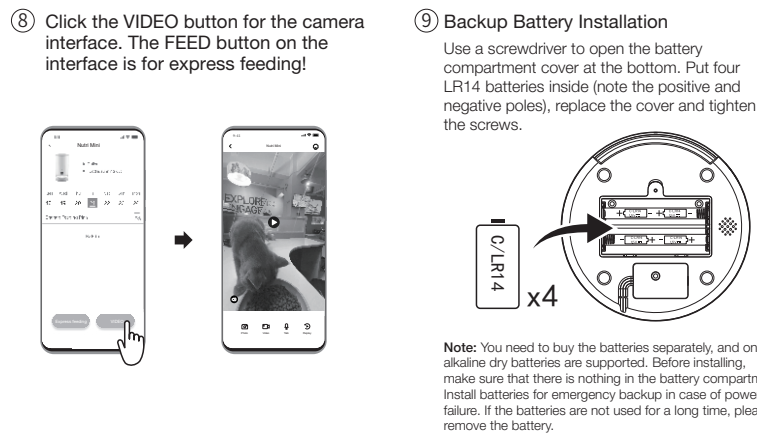
02 / Operations



EN



EN



03 / Quick Setup

1. Scan the QR code on the right and download the Petoneer App which is available on App Store and Google Play. Click Sign up to get walked through to create your Petoneer account.
2. Power on and ensure the Wi-Fi Indicator LED is flashing slowly, reflecting the device is ready for joining the Wi-Fi. Open the Petoneer App and click the "+" button and get walked through the SET-UP steps.
Note: 1. The feeder doesn't support the 5GHz Wi-Fi, please make sure your Wi-Fi is 2.4G.
2. If the Wi-Fi indicator is not blinking slowly after power-on, please long press and hold the manual feed button until the indicator blinks slowly.

04 / LED Status

LED Status	Specification
Red light is off	The food is more than 10%
Fast blinking red	The food is less than 10%
Red steady on	Jam

Manufacturer: SkyRC Technology Co., Ltd.
Address: 4.5,8/F, Building No.4, Metal Science Park, Guangguang South Road, Guihua, Guanlan, Longhua New District, Shenzhen 518110, China

EN

05 / Precautions

- Please use it in the indoor environment;
- Do not drop anything other than dry food into the food hopper. Otherwise, there is a risk of dysfunction or mistaken feeding;
- To prevent feeder from being hit by pets, it is recommended to place the feeder at the corner or against the wall;
- Please shield or organize the power cord well to prevent the pet from biting the cable and causing dangerous situations such as electric shock;
- This product is only suitable for DRY FOOD, and WET FOOD is prohibited.
- It is recommended to replace the desiccant once a month, and do not fall into the hopper, and NEVER use it if it is damaged.
- The pet food's shape and density will cause some deviations from the food hopper's capacity and the feeding unit's quantity.
- After each fill-up of the hopper, there may be deviation of two portions at the initial feeding time. It is recommended to calibrate manually! (Click the manual feeding button until food is fed)
- Clean the food passage regularly to get the kibbles out smoothly.
- DO NOT clean the main unit; instead, please wipe it with a rag. After cleaning the other parts, please dry it before reinstalling.
- Children must use under the guidance of adults.

06 / Certifications

FCC Instructions:
This product has been tested and found to comply with the limits for a Class B digital device, pursuant to Part 15 of the FCC Rules. These limits are designed to provide reasonable protection against harmful interference in a residential installation. This product generates, uses and can radiate radio frequency energy and, if not installed and used in accordance with the instructions, may cause harmful interference to radio communications. However, there is no guarantee that interference will not occur in a particular installation. If the product does cause harmful interference to radio or television reception, which can be determined by turning the equipment off and on, the user is encouraged to try to correct the interference by one or more of the following measures:
- Reorient or relocate the receiving antenna.
- Increase the separation between the product and receiver.
- Connect the product into an outlet on a circuit different from that to which the receiver is connected.
- Consult the dealer or an experienced radio/TV technician for help.
This device complies with Part 15 of the FCC Rules. Operation is subject to the following two conditions:
(1) This device may not cause harmful interference, and
(2) This device must accept any interference received, including interference that may cause undesired operation.
Warning: Changes or modifications not expressly approved by the party responsible for compliance could void the user's authority to operate the product.
FCC Radiation Exposure Statement:
The equipment complies with FCC Radiation exposure limits set forth for uncontrolled environment. This equipment should be installed and operated with minimum distance 20cm between the radiator and your body.

EN

Environmental Conditions
Operating Temperature: 32 °F to 104 °F, (0 °C to 40 °C) (indoor only)
SkyRC Technology Co., Ltd. declares that this Nutri Vision Mini(FDW050), is in compliance with the essential requirements and other relevant provisions of the Radio Equipment Directive (2014/53/EU).

Environment friendly disposal
You can help protect the environment!
Please remember to respect your local regulations; dispose of nonfunctional electrical equipment with an appropriate waste disposal center.

Manufacturer: SkyRC Technology Co., Ltd.
Floors 4, 5, & 8, Building 4, Metal Technology Park, Guangguang South Road, Guanlan, Longhua District, Shenzhen, China

- Read all the instructions**
- Do not touch hot surfaces. Use handles.
 - To protect against electric shock do not immerse cord or plug into water or other liquid.
 - Close supervision is necessary when any appliance is used by or near children.
 - Unplug from outlet when not in use and before cleaning. Allow to cool before putting on or taking off parts, and before cleaning the appliance.
 - Do not operate any appliance with a damaged cord or plug, should the appliance malfunction, or if it has been damaged in any manner. Return appliance to the nearest authorized service facility for examination, repair or adjustment.
 - The use of the accessory attachments is not recommended by the appliance manufacturer as it may cause injuries.
 - Do not use outdoors.

- Do not let the cord hang over edge of table or counter, or touch hot surfaces.
- Do not place on or near a hot gas or electric burner, or in a heated oven.
- Always attach plug to appliance first, then plug cord into the wall outlet.
- Do not use the appliance for other than intended use.
- WARNING: Never leave the appliance unattended whilst in use.
- Warning: keep the supply cord away from heating tip and metal enclosure while using.
- This appliance is not intended for use by persons (including children) with reduced physical, sensory or mental capabilities, or lack of experience and knowledge, unless they have been given supervision or instructions concerning use of the appliance by a person responsible for their safety.
- Children should be supervised to ensure that they do not play with the appliance.
- If the SUPPLY CORD is damaged, it must be replaced by the manufacturer, its service agent or similarly qualified persons in order to avoid a hazard.
- WARNING: This tool must be placed on its stand when not in use.

SAVE THESE INSTRUCTIONS.

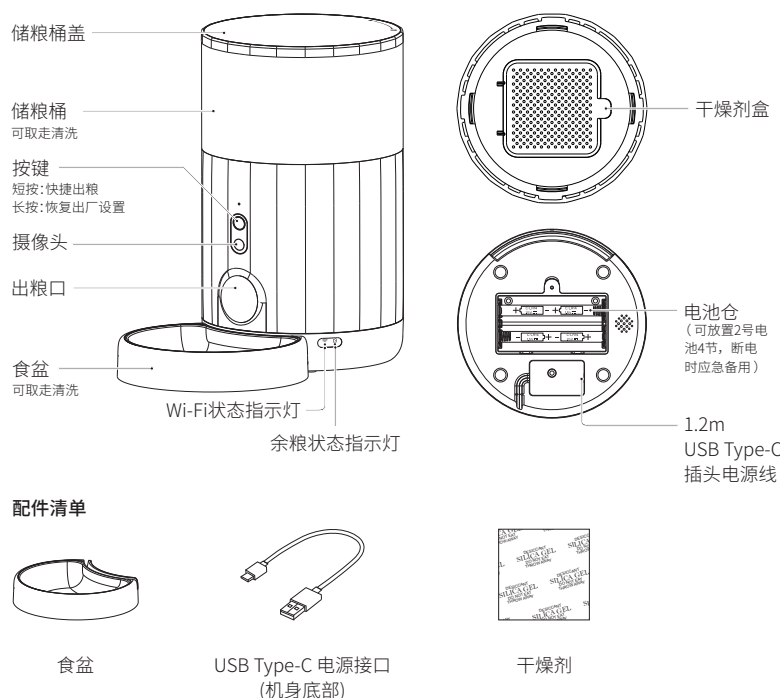
07 / Warranty Terms

Within the period of warranty, if the product falls with no fault of user operations, it will be repaired at Petoneer's expense. The warranty will not cover product failure in examples below:
1. Intentional damage to the product by the user or third party
2. Failure to operate or maintain the product following the (QIG) Quick Installation Guide Instructions.
3. Failure by natural wear and tear including but not limited to scratching, corrosion, oxidation and rusting.
4. Failure by non-authorized repair of the product including but not limited to user's own or third-party repairing attempts or modifications.

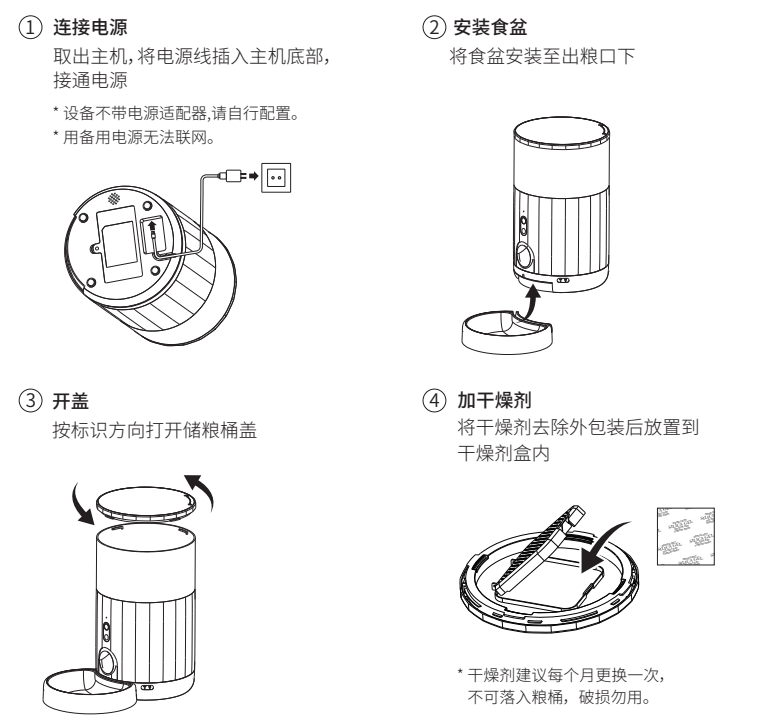
www.petoneer.com
All Pictures shown in the manual are for illustration purpose only.
Actual product may vary due to product enhancement.

EN

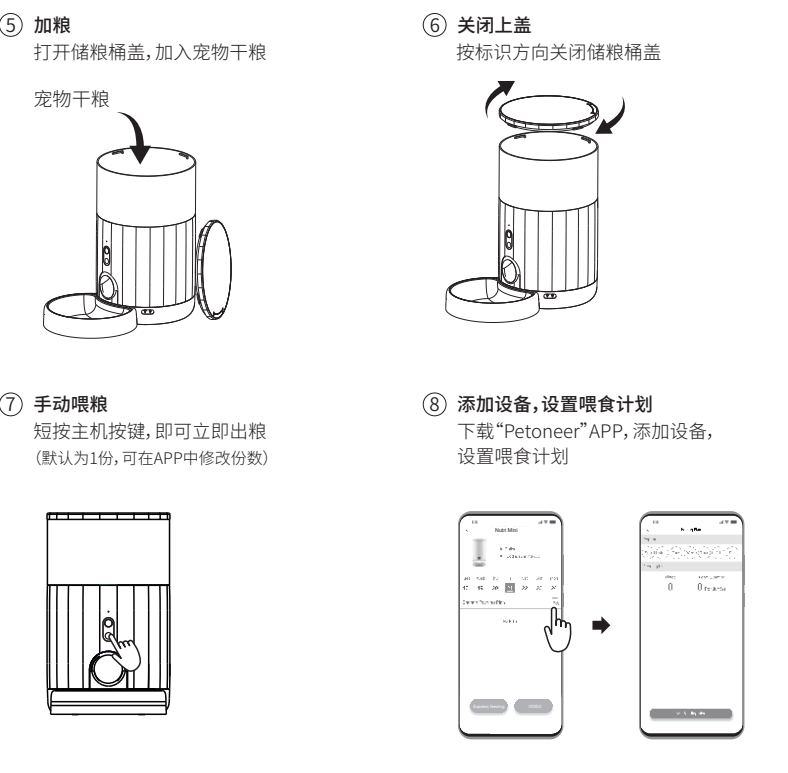
01 / 产品概览



02 / 使用操作

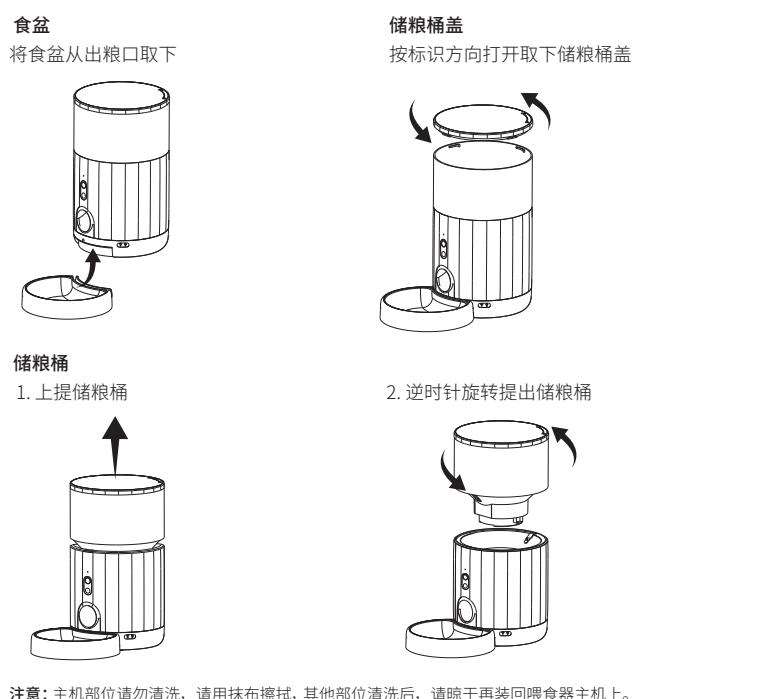


中文



中文

04 / 拆卸清洗



05 / 余粮状态指示灯与参数

余粮状态指示灯	基本参数
红色熄灭	余粮约大于10%
红色闪烁	余粮约小于10%
红色常亮	堵粮

产品名称: 迷你可视宠物喂食器 产品型号: FDW050
容量: 2.6L (约1.2kg) 工作电源: 5V=2A
通信方式: Wi-Fi (2.4GHz) 通信距离: 30m
产品尺寸: 191x191x315mm 产品净重: 1.55kg
执行标准: Q/TK 002-2019 保 修 期: 1年

中文

06 / 注意事项

- 请在室内环境使用。
- 请勿将宠物干粮以外的物品落入储粮桶, 否则存在造成设备异常或造成宠物误食的风险。
- 为防止宠物扑倒, 建议将喂食器放置角落或靠墙处。
- 请做好电源线遮挡或收纳, 以防宠物撕咬电线, 造成触电等危险状况。
- 此产品只适用宠物干粮, 请勿放入湿粮。
- 干燥剂建议每个月更换一次, 不可落入粮桶, 破损勿用。
- 宠粮颗粒形状及密度会对粮桶及出粮容量造成一定偏差。
- 在空粮桶中加入宠粮后, 首次出粮量可能会有两份左右偏差, 点击手动出粮按钮直至出粮即可。
- 请定期清理粮道, 保持出粮顺畅。
- 主机部位请勿清洗, 请用抹布擦拭, 其他部位清洗后, 请晾干再放回喂食器主机上。
- 儿童必须在成人指导下使用。

07 / 保修条款

在保修期限内, 对于正常使用Petoneer产品过程中, 由于非人为导致的损坏, 所产生的维修费用和人工费用, 由Petoneer承担。以下情况导致的维修不在保修条款包含中。
(1) 故意行为导致的损坏。
(2) 未按产品使用说明书指引使用、保养该产品。
(3) 设备正常磨损、腐蚀、氧化、锈蚀、耗损等原因导致的损坏。
(4) 因在非Petoneer授权维修代理商或用户自身进行维修、改造、清洗而造成的损坏。
服务热线: 400-808-5869
服务网址: www.petoneer.com
制造商: 天创新科技(深圳)有限公司
制造地址: 深圳市龙华区观澜街道桂花社区观光路美泰工业园4栋4,5,6层

* 为了提供更好的产品, 我们会定期进行产品改良, 产品实物可能与说明书有差异。

中文